

Fitting Instructions - BMW Series 1 2004 to 2011 Generation 1 (077)

Thank you for purchasing your cargo liner from our family-run business. Please follow the steps below to install your liner, after you have read the preparation notes.

PART 1 - THE MAIN LINER

1. Before you start you'll need to cut the supplied LOOP Velcro as follows for the liner: 6 x 2" long pieces, and 2 x 4" long pieces. The remainder is only required if you have the left-hand-side CD unit detailed below. Now lay the liner in approximate position in the trunk of your vehicle. The panel with the Custom Covers label attached sits against the back of the rear seat.

ATTACH THE BASE FIRST ...

2. Arrange the base so it fits snugly. The Velcro sewn in to the liner base will attach directly to the carpet.
3. At the tailgate end where the liner meets the rear of the vehicle (NOT the bumper flap) attach the 6 x 2" long Velcro strips to the Velcro strips sewn onto the base of the liner (see sketch A), then attach this directly to the tailgate trim using the liner as your guide.

NOW FOR THE BACK OF THE SEATS ...

4. Pass the tapes at the top of the seat backs around each headrest locator pole and Velcro back onto themselves.

NOW THE SIDES ...

5. Carefully position the side panels neatly into place, the Velcro sewn onto the sides of the liner will attach directly to the carpet.

IF YOU HAVE THE BUILT-IN CD UNIT OR CD PREPARATION UNIT ON THE LEFT-HAND-SIDE ...

6. To take up the slack liner material on the left side, use the remaining Velcro to "pleat" the material as shown in figure 1.1 using the hook and loop Velcro supplied.
7. ***BUMPER FLAP ...***
To position the bumper flap in the upright position, attach the 2 pieces of 4 inch Velcro to the large Velcro tabs sewn onto either side of the bumper flap. Remove the backer on the adhesive-backed Velcro and, using the liner as a guide, attach these in the gutters of the tailgate.



PLEASE NOTE: YOU MUST UNFASTEN THE HEADREST STRAPS BEFORE PLACING THE REAR SEATS FORWARD

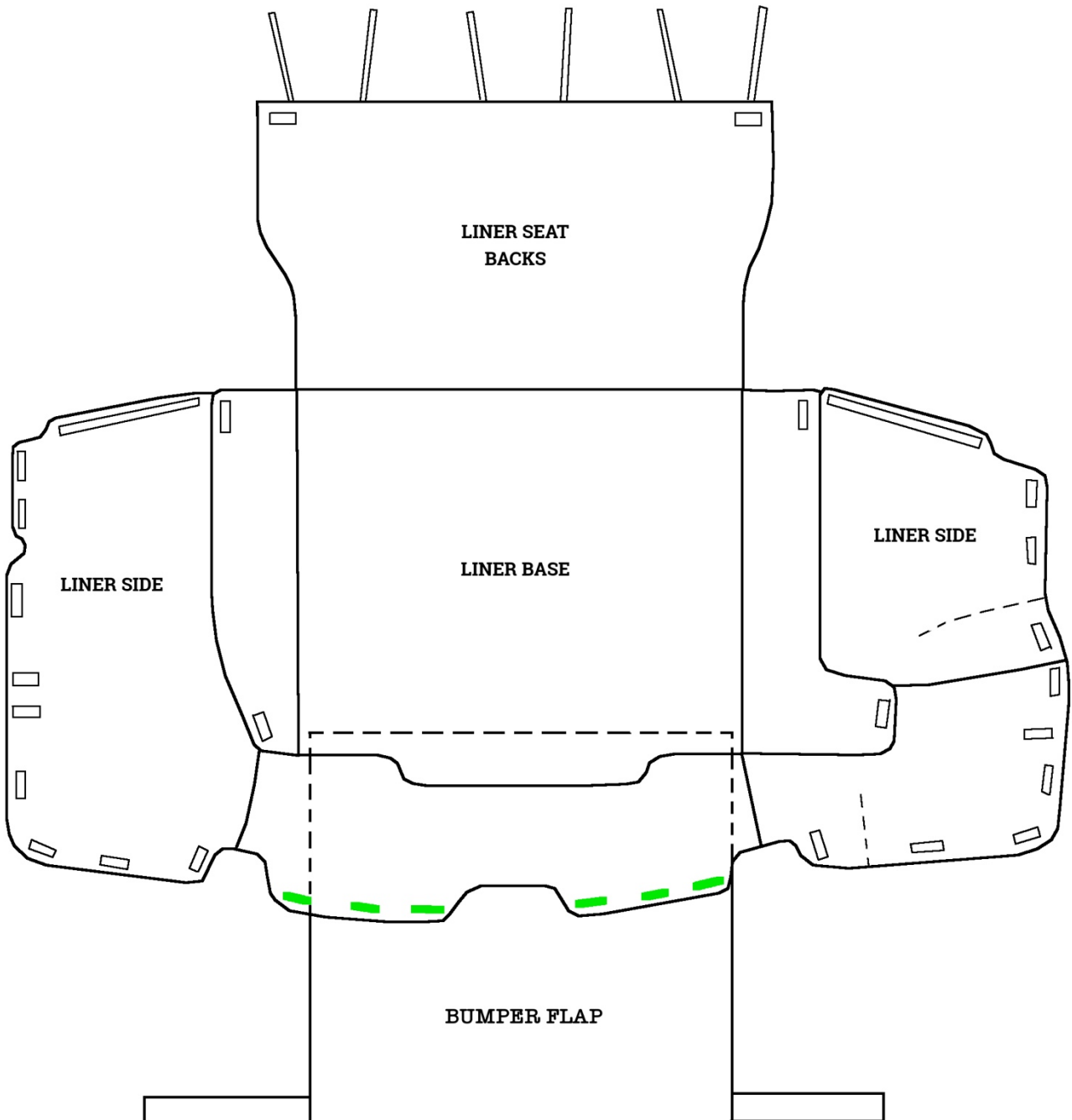
Velcro Fixing Kit - 1 x 26 inch loop Velcro and 1 x 6 inch hook Velcro strip supplied, please cut to required lengths

IMPORTANT PREPARATION NOTES

Before attaching the self-adhesive Velcro to any car plastics/metal trim (NOT carpet); it is very important to remove any silicone film from the trim to ensure a good bond. Silicone is found in many valeting products and is also applied during manufacture. To remove any silicone build up the surface must be thoroughly cleaned using a silicone remover, we recommend 'Intensive tar remover' made by AutoGlym however a white spirit / mineral spirit will also work just as well. Leave the area to dry for 10 minutes and wipe off any residue with a dry clean cloth after cleaning before applying the self-adhesive Velcro. ONCE THE VELCRO HAS COME INTO CONTACT WITH SILICONE RESIDUE IT CANNOT BE

SKETCH A

■ = INDICATES AREAS WHERE A 2" ADHESIVE-BACKED VELCRO PIECE NEEDS TO BE APPLIED



Velcro Fixing Kit - 1 x 26 inch loop Velcro and 1 x 6 inch hook Velcro strip supplied, please cut to required lengths